

Worm Anatomy Zoology Lab

Created by

Rick Gillis and Roger J. Haro

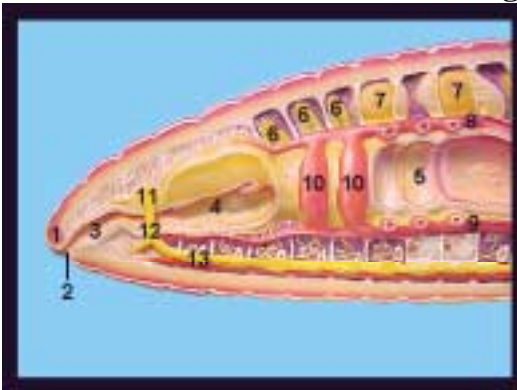
Department of Biology

University of Wisconsin - La Crosse

<http://bioweb.uwlax.edu/zoolab/index.htm>



Earthworm Model Segments 1-12



- | | |
|---------------------|------------------------------|
| 1. Prostomium | 8. Dorsal blood vessel |
| 2. Mouth | 9. Ventral blood vessel |
| 3. Buccal cavity | 10. Aortic arches |
| 4. Pharynx | 11. Suprapharyngeal ganglion |
| 5. Esophagus | 12. Circumphar. connective |
| 6. Nephridia | 13. Ventral nerve cord |
| 7. Seminal vesicles | |

Earthworm Model Segments 3-22

- | | |
|----------------------|-------------------------|
| 1. Esophagus | 6. Dorsal blood vessel |
| 2. Crop | 7. Ventral blood vessel |
| 3. Gizzard | 8. Ventral nerve cord |
| 4. Intestine | 9. Setae |
| 5. Chloragogue cells | 10. Seminal vesicles |

